

Historic Map Works™ Library Edition



To uncover the amazing pasts of people and places, start here.



Historic Map Works™ Library Edition is one of the most extensive digital map collections available, with over 1.4 million antique and historic maps and map related images. It provides unprecedented access to high-resolution, full-color maps, spanning hundreds of years that help researchers trace the “residential genealogy” of families and locations over time.

Using these collections, genealogists and local historians can uncover clues about ancestral lands, historical structures, property boundaries, and land ownership. And, researchers can find illustrative sources for the study of land use, migration patterns, community growth, topography, and more.

An exclusive partnership between ProQuest and Historic Map Works brings this collection to libraries and their patrons globally.

Remarkable historic maps. From big cities to small farms.



Historic Map Works delivers a diverse collection of sources that allow users to discover the physical spaces of the past. Three core content sets make up the collection:

Property (Cadastral) Maps features over 615,000 maps detailing the development of North America since the late 1700's to the present. Unlike many collections, coverage includes not only big cities, but also extensive coverage of rural areas and small towns. These extremely detailed and comprehensive maps illustrate property and land ownership across centuries, often with the contemporaneous owners' and/or occupants' names adjacent to structures and plats.

Antique Maps features over 10,000 antiquarian maps from around the world, from the 15th to 19th centuries. These exclusive digital maps are drawn from the University of Southern Maine's Osher Map Library, whose collections include many of the world's most important printed maps.

City Directories & Illustrations features over 100,000 contemporaneous pages of illustrations including bird's eye views, building images, and scenery. And, over 625,000 auxiliary pages from atlases and city directories, with address listings, images and photos, business ads, landowner lists, town and county histories, and more.

The special attention to image quality allows users to see the details that are so important to the use of maps in research. High-resolution digital scanning clearly reproduces even the smallest features, including street and property names, plat dimensions, and structural details.



Intuitive search functionality. Incredible image quality.



Historic Map Works has a simple, intuitive search interface to help beginner and seasoned researchers alike effectively find and access the maps they need.

Search options include:

- **Keyword search** queries map names, publishers, dates, locations, and more
- **Advanced search** allows for additional search fields
- **Address search** queries by address, city, and/or state
- **GPS MapFinder** queries by latitude and longitude coordinates, in degrees (available for over 300,000 maps)
- **Illustrations and Directories search** allows keyword and state queries across either content set
- **Points of Interest search and browse** contains 3 million of the most popular places and geographical features

Browse options include:

- **Browse the world by continent** uses an interactive world map
- **Browse collections** uses content lists that can be re-sorted by name, publisher, date, and more
- **Browse directories by state**

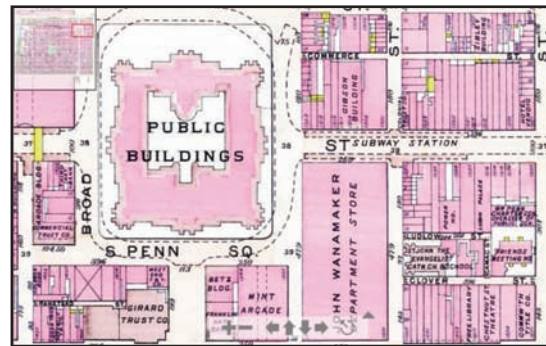
Additional features also make reviewing search results and using the individual maps easy. Quickly scan result lists using image previews; zoom in/out of maps to see every detail; and use image cropping to save the best parts. Plus, all maps can be saved or printed for records and further use offline.

Insight into how physical and human geographies have changed over time.

Property and land ownership detail spanning over 200 years

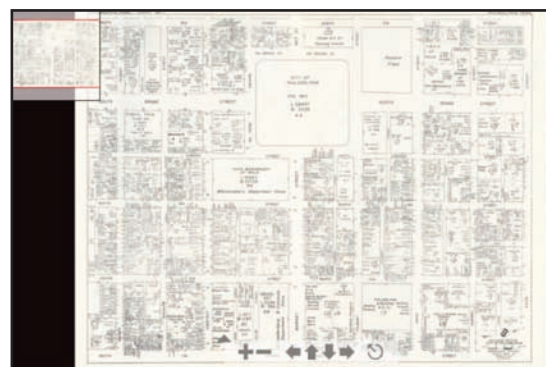


Collections composed of multiple layers through time, facilitating new methods of genealogy and land-use research



Penn Square – 1910

Antique maps illustrating the changing perceptions of the world around us



Penn Square – 1950

To sign up for a **FREE TRIAL**, call 800-521-0600 or visit www.proquest.com.